



Revision



SLAB-BOX INSTALLATION (4' x 7', 6' x 8', 5.5' x 8' AND 8' x 10')

UGS

REVISION: Updated Notes and Callouts

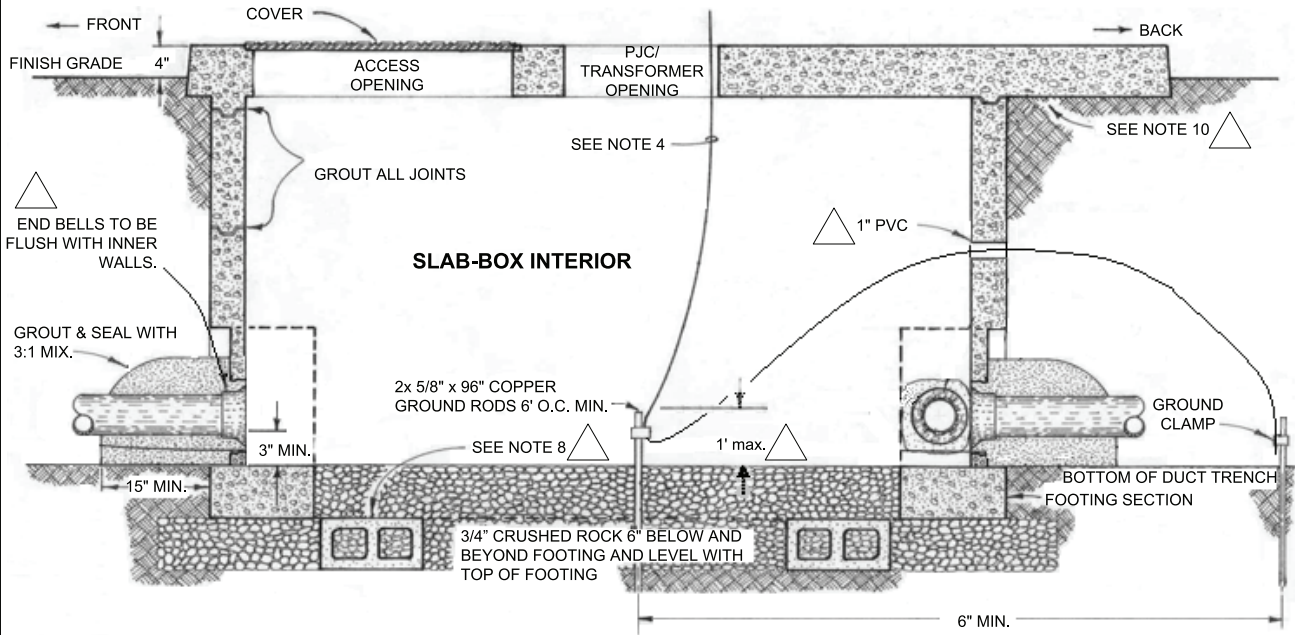
REVISION DATE: 12/17/10

APPROVED BY: *George Hanson*

APPROVED DATE: 12/21/10

PREPARED BY: *SJR*

CHECKED BY: *WFM*



Notes:

1. For details and dimensions see UGS-010, 050, 700, 720, and 721.
2. Locate slab-box as specified on the job drawings with verification by Department Inspector.
3. Install protective barriers per UGS-290 or protective wall per UGS-291 if slab-box is exposed to vehicular traffic. A protective wall may also be required to protect slab-box from embankments.
4. Ground wire entering from outside ground rods shall be inserted through the 1" PVC and extended 3' above slab.
5. Slab-boxes ground rods to be spaced 6' min. apart. See UGS-225 for grounding details.
6. End bells required at all conduit entrances, end bells to be of the same material as the duct to which it is attached.
7. Protect end bells and conduits from the entrance of grout and debris.
8. (6) 6" x 6" x 16" concrete blocks, set on sides of slab box; 3 on each side spaced equally at box length. The blocks to be set level and to grade on a base compacted to 90 % and inspected before setting slab-box.
9. After setting and prior to transformer/PJC installation seal slab-box openings with 3/4" plywood or 3/16" steel plate.
10. Minimum clearance in front of slab-box is 8'. The minimum side and back clearance is 2' from non-combustible surfaces and 3' from combustible surfaces.